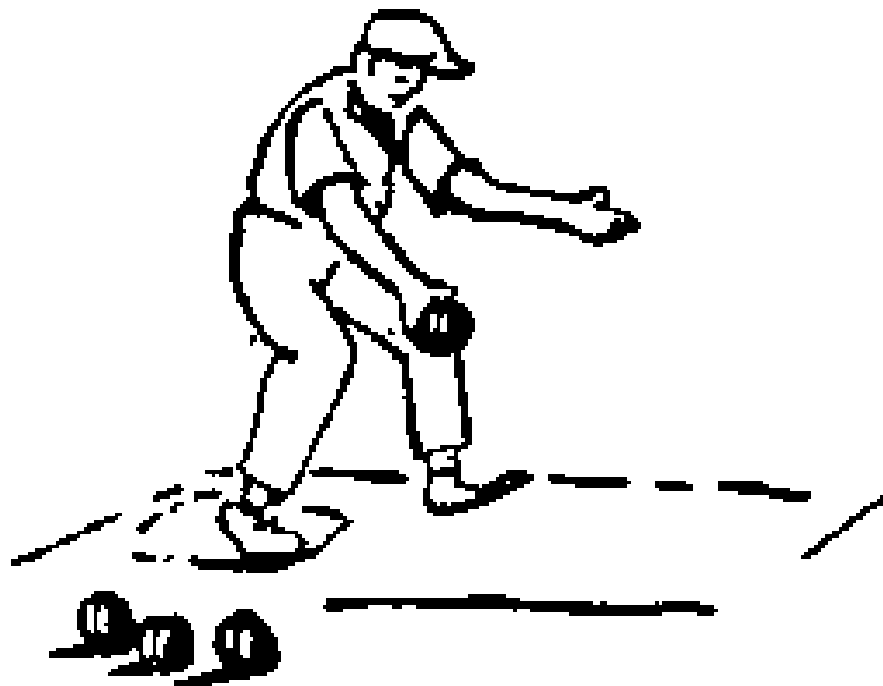


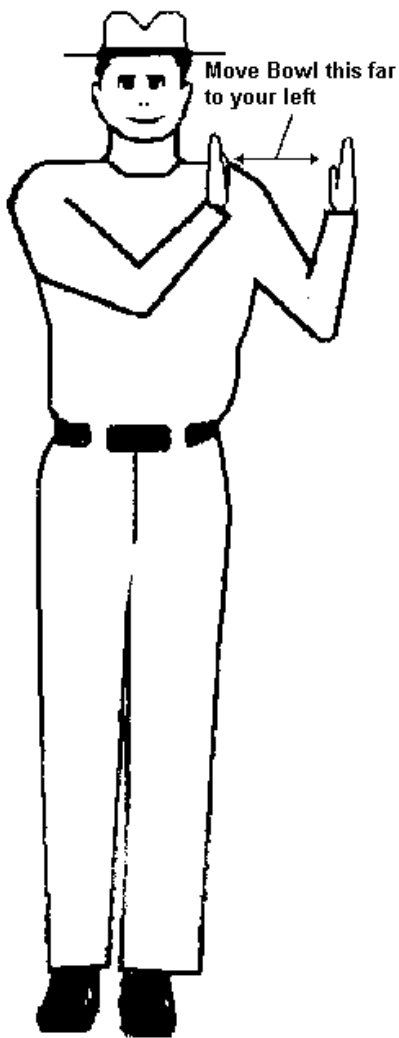
Lawn Bowling Etiquette

USE HAND SIGNALS

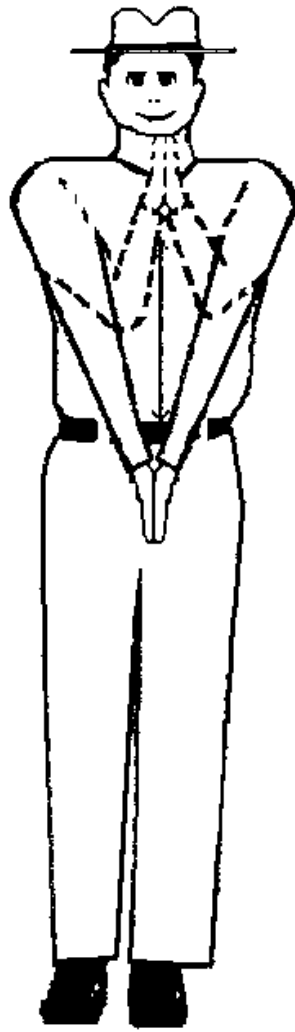
DON'T SHOUT

DON'T YELL

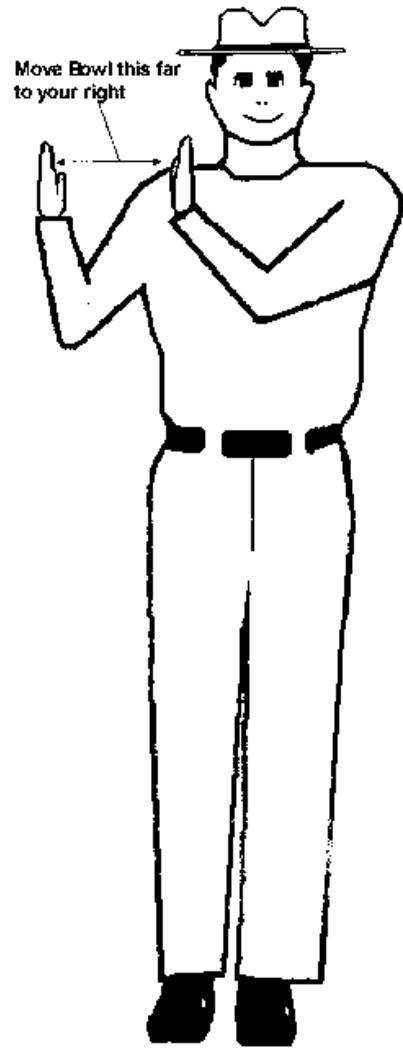




MOVE JACK TO YOUR LEFT

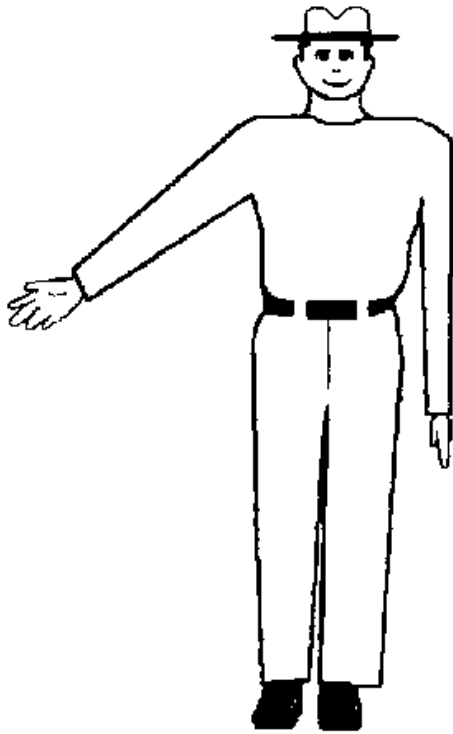


THE JACK IS SET

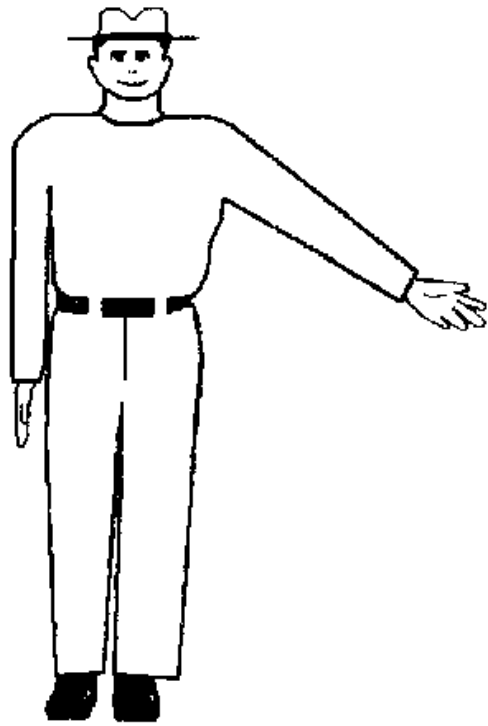


MOVE JACK TO YOUR RIGHT

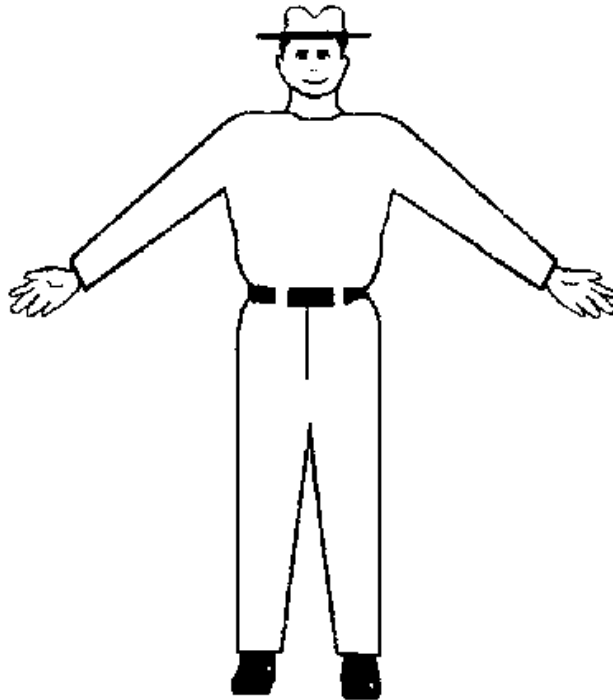
SETTING THE JACK



DRAW FROM THE LEFT



DRAW FROM THE RIGHT



DRAW EITHER WAY

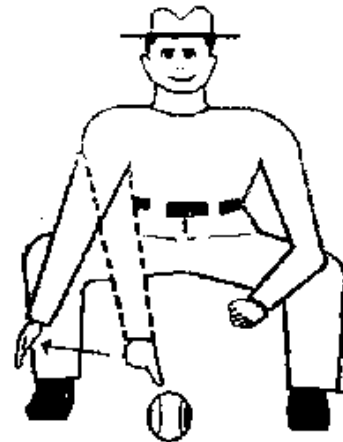
CALLING FOR THE DRAW



WHERE ARE OUR TEAM'S BOWLS



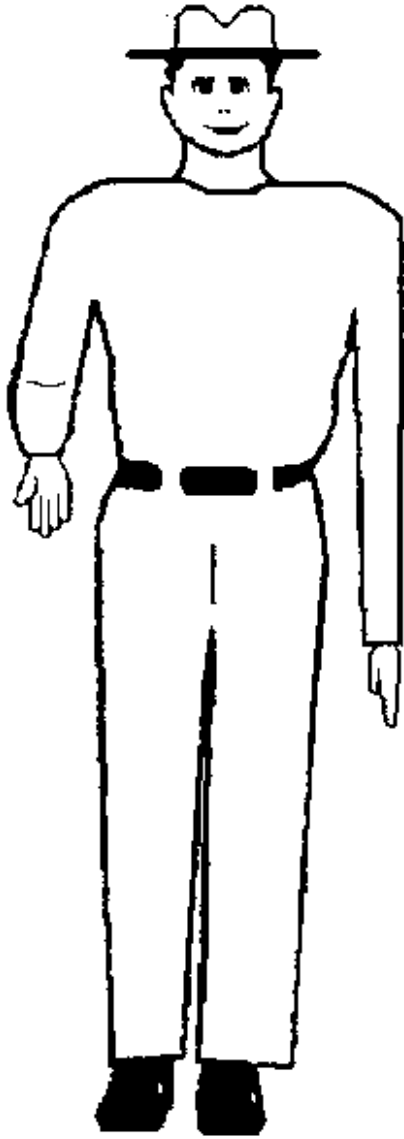
THIS IS OUR BOWL



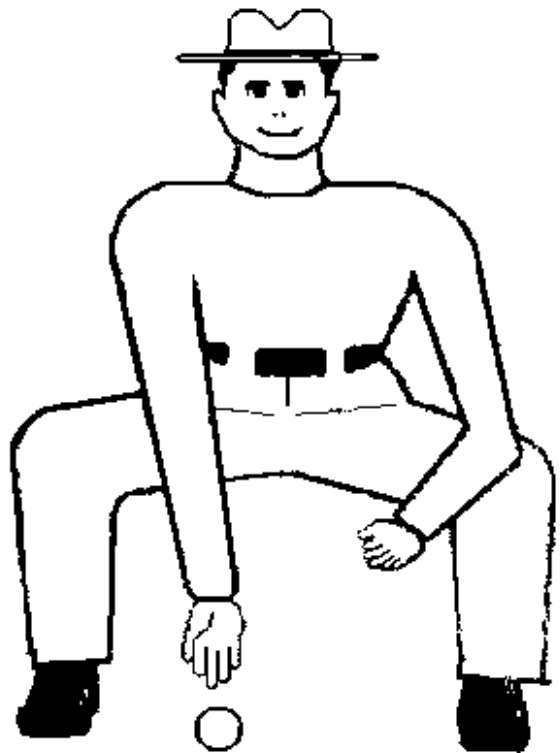
THIS IS THEIR BOWL

CAUTION: DO NOT TOUCH BOWLS

IDENTIFYING BOWLS



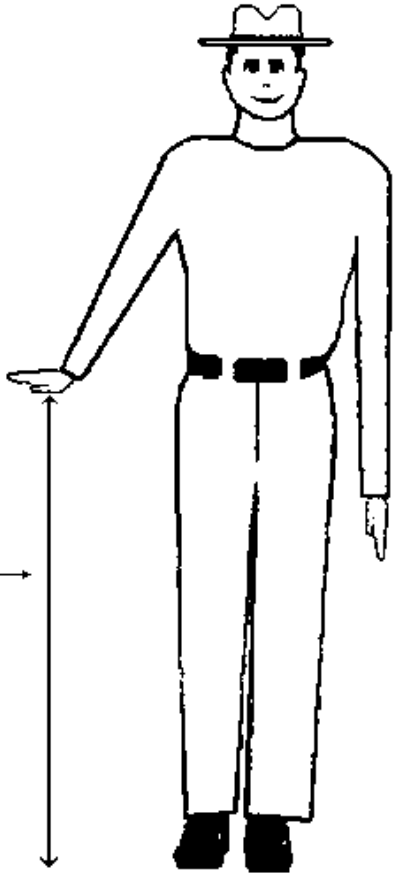
WHERE IS THE JACK



HERE IS THE JACK

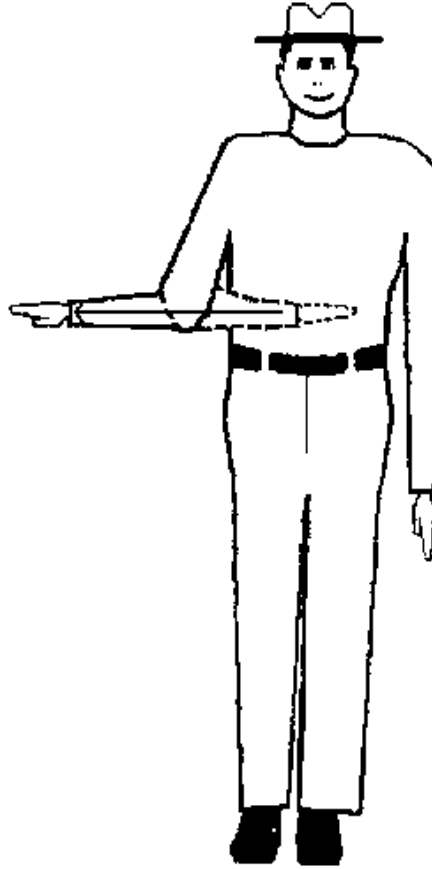
CAUTION: DO NOT TOUCH JACK

LOCATING THE JACK

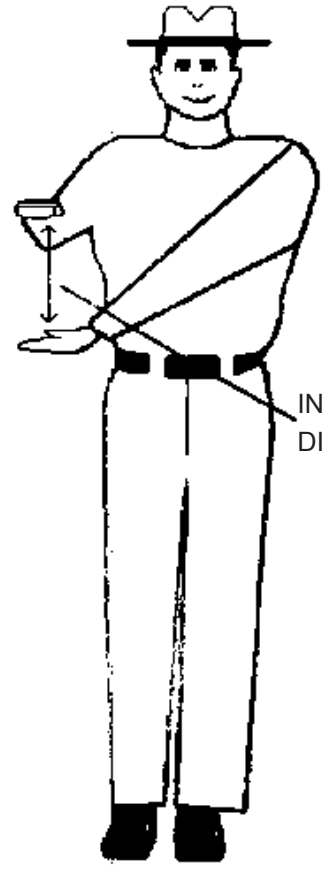


INDICATES
DISTANCE

LONG DISTANCE
FROM THE JACK



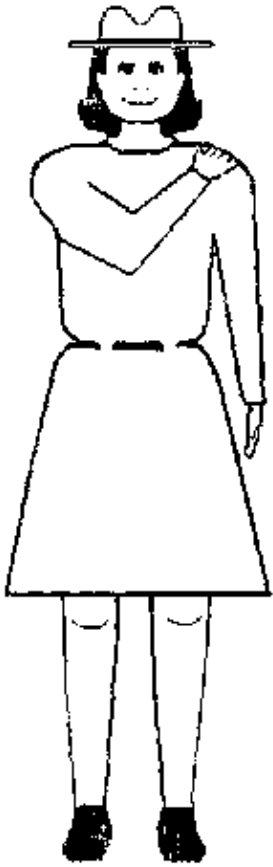
BOWL IS EVEN
WITH THE JACK



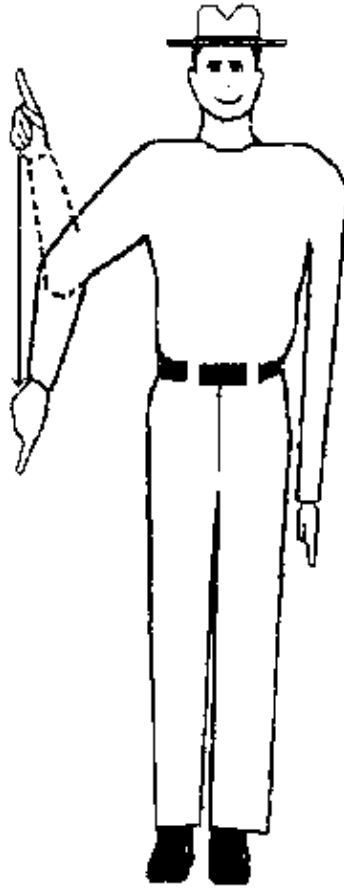
INDICATES
DISTANCE

SHORT DISTANCE
FROM THE JACK

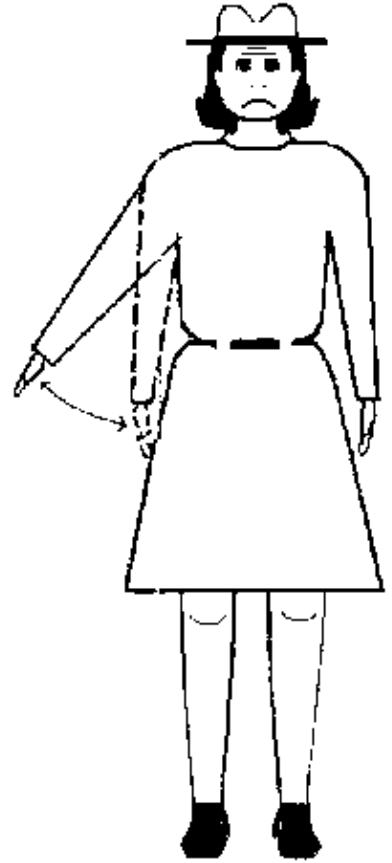
DESCRIBING HEAD



WE HAVE THE JACK

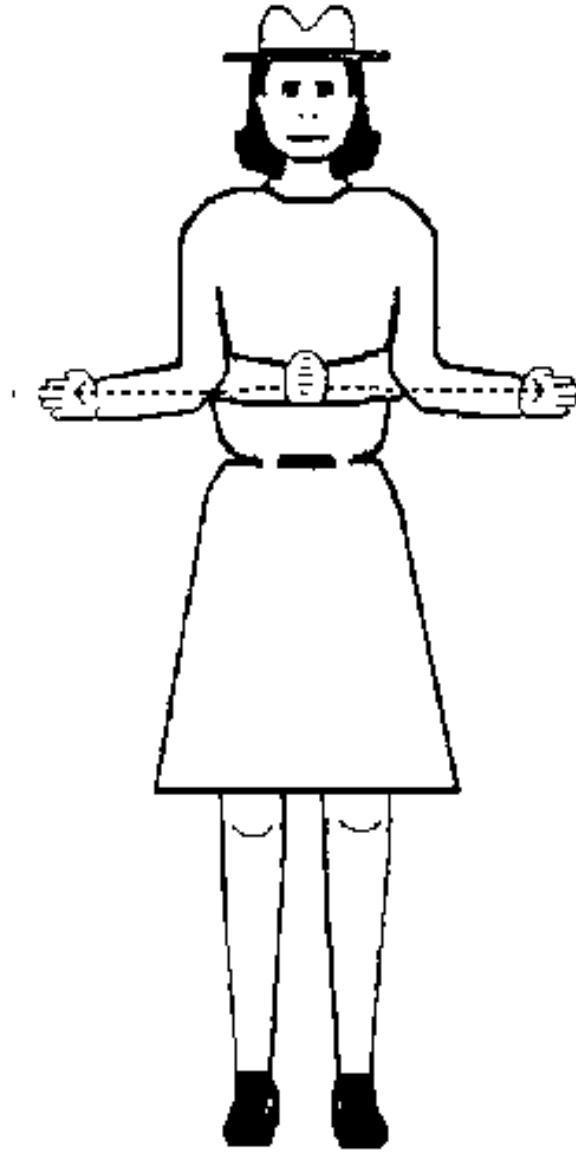


ARE WE UP OR DOWN



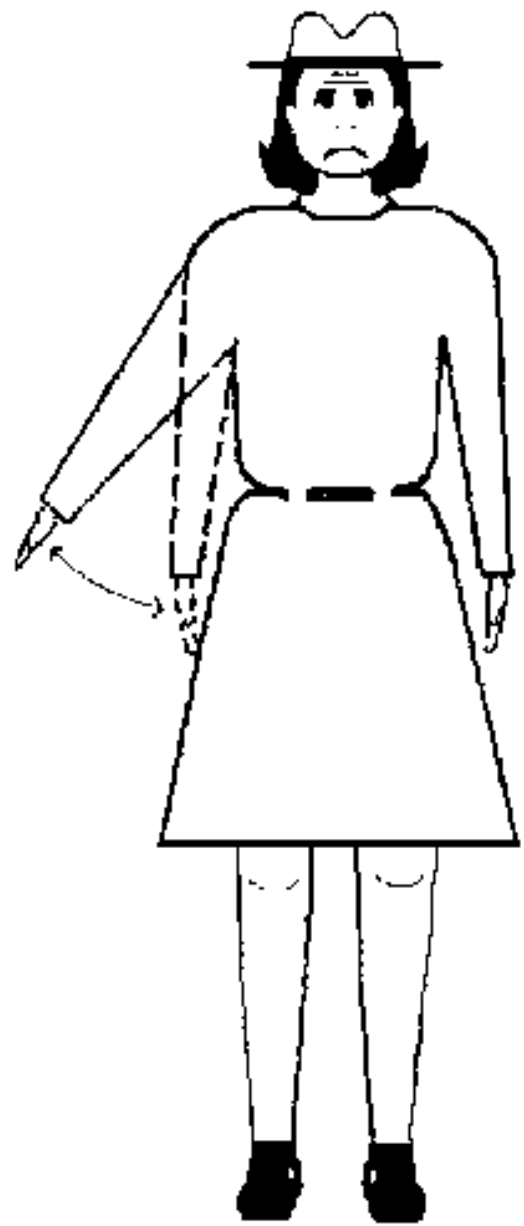
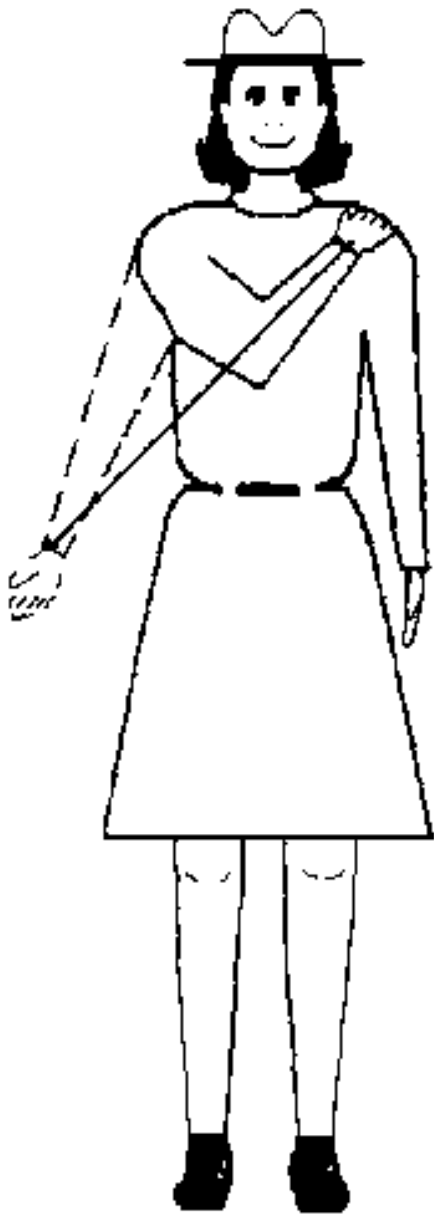
THEY HAVE THE JACK

DESCRIBING HEAD



UNABLE TO DETERMINE THE POINT
WITHOUT MEASURING

DESCRIBING HEAD



VICES MUST AGREE BEFORE SIGNALS ARE
GIVEN
GIVING POINT SCORE